



EXPANDED VIEWS, CAPTURED DETAILS

Dahua X-Spans Series



Panoramic Image &
Detail In One View



2 Intelligent Modes



Cost Reduction



Vertically Adjustable
Panorama

| What is Dahua X-Spans?

The X-Spans series expands the camera view by expanding one or more lenses based on the traditional PTZ camera, providing a panoramic picture and detail in one camera.

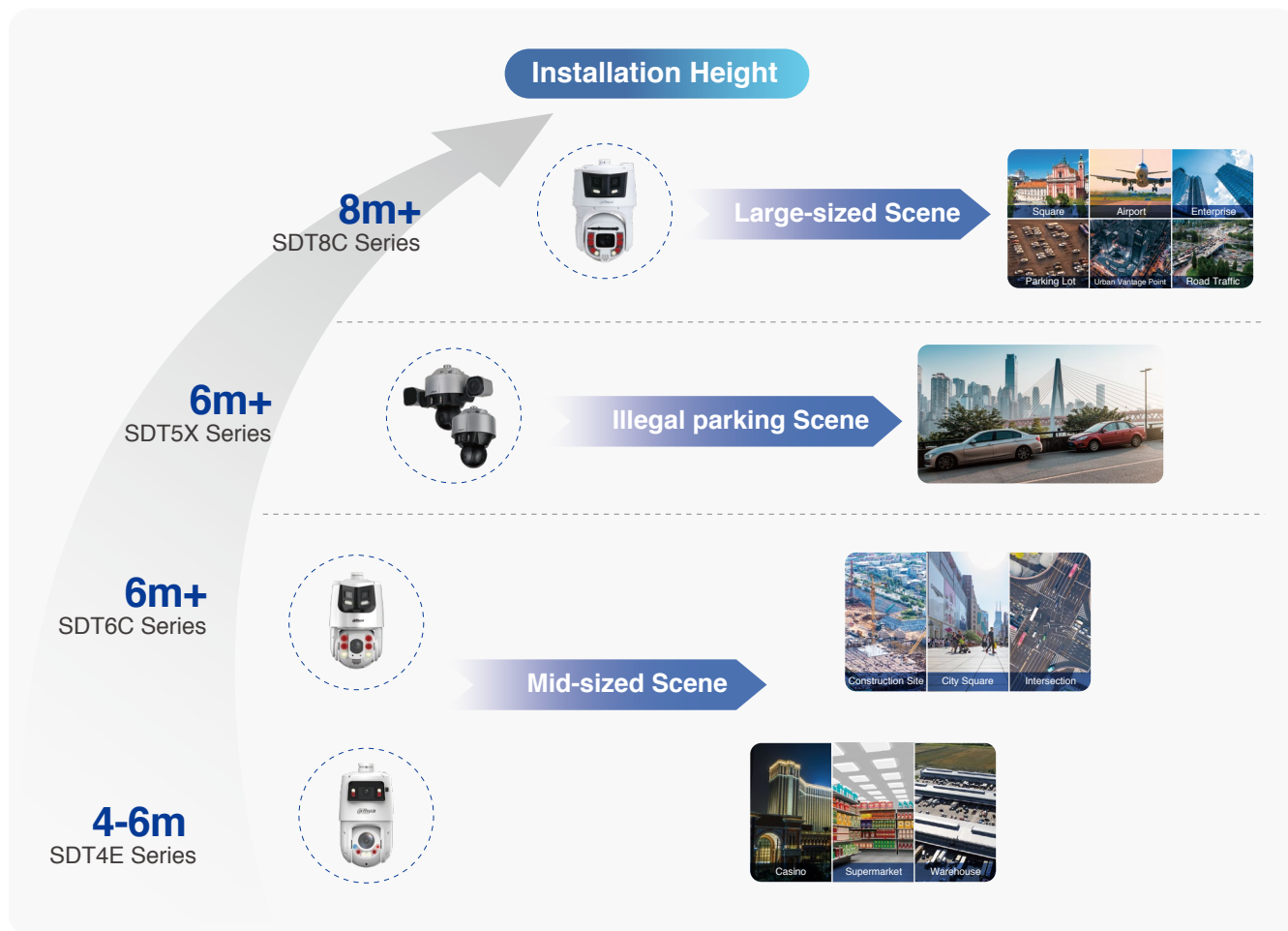


2 Solved Problems:

- The traditional PTZ camera loses the original monitoring screen after tracking a object.
- The bullet camera only sees the overall scene, but cannot view specific details.

| Product Overview

According to the installation height of products, the panoramic channel can cover large-sized, middle-sized and small-sized scenes, providing user with more choices.



Key Features

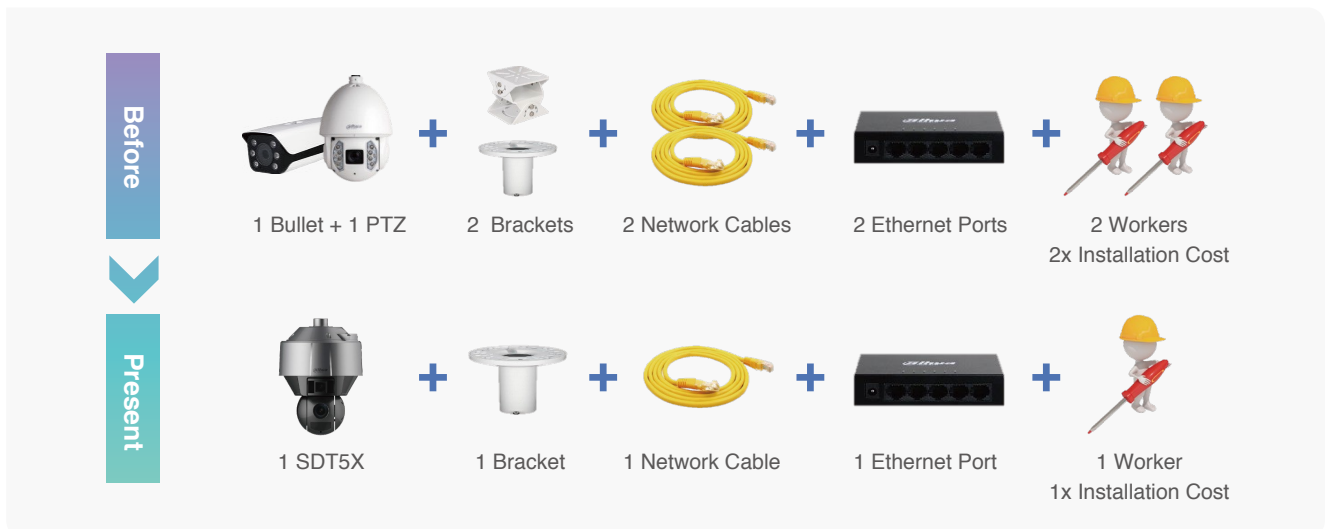
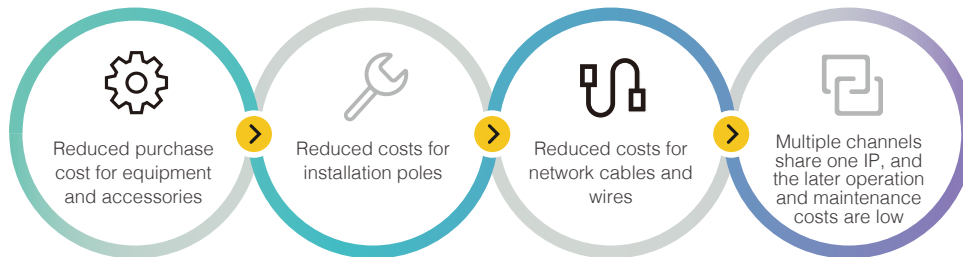
Panoramic Image & Detail In One View

X-Spans' Panoramic channel presents up to 180° ultra-wide view. It allows security teams to continue monitoring large areas with no interruptions, while PTZ cameras simultaneously zoom, tilt, or pan to monitor specific security events that occur.



Cost Reduction

X-Spans series products generally consist of one or two bullet cameras and one PTZ camera. It effectively reduces both purchase and installation costs of the security system.



2 Intelligent Modes

X-Spans Series supports linkage mode and independent mode.

LINKAGE MODE

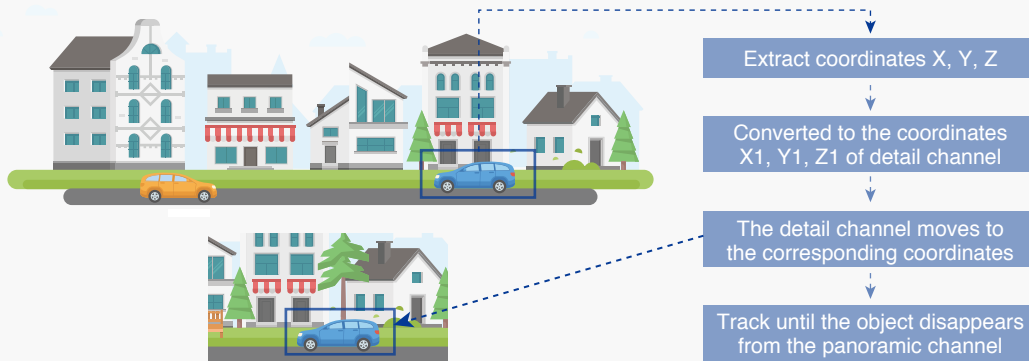
The panoramic channel and detail channel can be linked to achieve smart tracking. When a human/vehicle triggered the IVS rule of the panoramic channel, the detail channel will proceed to track the detected object.

Linkage Tracking

The camera extracts the coordinates of the object in the panoramic channel and converts it to the corresponding detail channel coordinates. The detail channel moves to the position according to the coordinates until the target disappears from the panoramic channel.

Advantages:

It offers high tracking accuracy. The object can still be tracked even if it is partially occluded.



Relay Tracking

To achieve long-distance tracking, Dahua launched the relay tracking algorithm that integrates linkage tracking and auto tracking. When the object is in the panoramic channel, the smart tracking algorithm is used to track the object. When the object leaves the panoramic channel, the detail channel uses its own Auto Tracking 3.0 algorithm to track the object.

Advantages:

The tracking distance is long. The object can still be tracked continuously after walking out of the panoramic view.



EXPANDED VIEWS, CAPTURED DETAILS

Dahua X-Spans Series



INDEPENDENT MODE

The camera can be used as two independent cameras. The two channels can use different AI functions and the functions can be set by schedule.



Smart Dual Light
Perimeter Protection



Active Deterrence
Auto Tracking 3.0
Perimeter Protection

Adjustable Panoramic Channel

If the panoramic camera is not adjustable, its monitoring angle is very limited. Dahua X-Spans series has different adjustment methods according to product positioning.

SDT5X Series

Dual PTZ



Panoramic Channel
Pan: 0°–360° endless; Tilt: 0°–30°
Detail Channel
Pan: 0°–305°; Tilt: -10°–180°
(angle between two cameras: -125° to +180°)

SDT8C Series

Digital Tilt Panorama



Panoramic Channel
Tilt: 0°–15°
Detail Channel
Pan: 0° to 360° endless
Tilt: -30° to +90°; Auto Flip: 180°

SDT6C Series

Fixed Panorama



Panoramic Channel
Fixed 10°
Detail Channel
Pan: 0°–360° endless;
Tilt: -20° to +90°; Auto Flip: 180°

SDT4E Series

Manual Tilt Panorama



Panoramic Channel
Tilt: 13°–23°
Detail Channel
Pan: 0°–360° endless;
Tilt: -20° to +90°; Auto Flip: 180°

Product Overview



SDT5X Series

For Illegal Parking Detection

- Panorama: 2688 (H) × 1520 (V), Detail: 2688 (H) × 1520 (V)
- Supports displaying of panoramic and detail views simultaneously
- Supports Illegal Parking Detection
- Built-in speaker to drive away illegally parked vehicles (-PV model only)
- Supports PFA Technology, IR 100m and IP67



SDT8C Series

For Large Scene

- Panorama: 5376 (H) × 1520 (V), Detail: 3840 (H) × 2160 (V)
- Installation height: 8m
- Supports displaying of panoramic and detail views simultaneously
- Supports Face Recognition, Video Metadata, Smart Tracking and Perimeter Protection
- Supports technology+ technology, IR distance up to 450m



SDT6C Series

For Middle Scene

- Panorama: 3840 (H) × 1080 (V) Detail: 2560 (H) × 1440 (V)
- Installation height: 4~6m
- 32x Optical zoom
- Perimeter Protection, Face Detection, Smart Tracking, Auto Tracking
- Sound and light alarm
- 150m IR distance and IP66



SDT4E Series

Smart Dual Light Bullet + TiOC PTZ

- Panorama: 2560 (H) × 1440 (V) Detail: 2560 (H) × 1440 (V)
- Installation height: 4~6m
- 25x Optical Zoom
- Perimeter Protection, Face Detection, Smart Tracking, Auto Tracking 3.0
- Smart Dual Light panoramic channel
- TiOC detail channel
- 100m IR distance and IP66

*Design and specifications are subject to change without notice.

Ver. 1, Aug. 2023

DAHUA TECHNOLOGY

Add: No.1199 Bin'an Road, Binjiang District, Hangzhou, China. 310053
 Email: overseas@dahuatech.com
 Website: www.dahuasecurity.com



YouTube



LinkedIn



Partner App



Website